

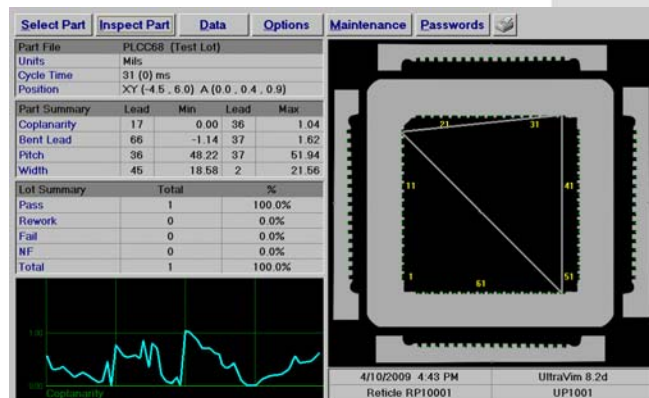
UltraVim Vision Module

The UltraVim module inspects a variety of leaded device packages including QFP, TSOP and J-Lead devices in three dimensions. Standard device file libraries provide for easy setup and training. Custom telecentric optics automatically compensate for changes in device height to provide true 3D metrology data. Digital I/O signals allow your handler to communicate with the system to reject failed devices.



UltraVim Features

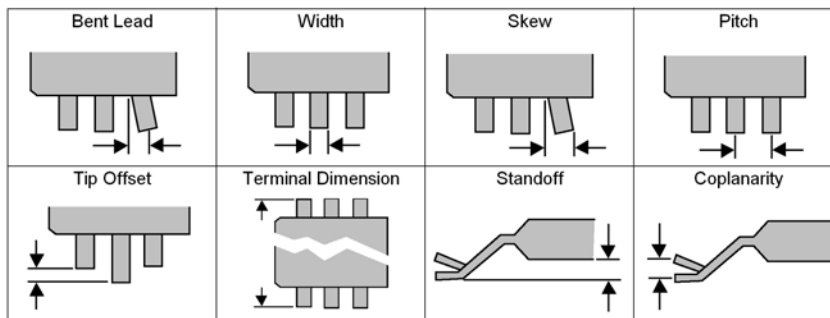
- Patented Vision Technology
- 1600x1200 Digital Camera
- Easy Setup and Training
- Extensive Data, Charts & Reports
- Integrated Mark Inspection Option
- Multiple Language Options
- Windows XP Interface



Options

- QFP Golden Device
- LCC Inspection Head
- Mark Inspection Option
- 19mm Inspection Reticle
- 35mm Inspection Reticle

Standard Measurements



For more information or a quotation, please contact us: